

Gummingurru: Part of Something Bigger'

Worksheets (the answers) For the teacher

Contents

Worksheet 1 - 'Different environments'

Worksheet 2 - 'Yuris'

Worksheet 3 - 'Ceremonies'

Worksheet 4 - 'Behaviour at the site'

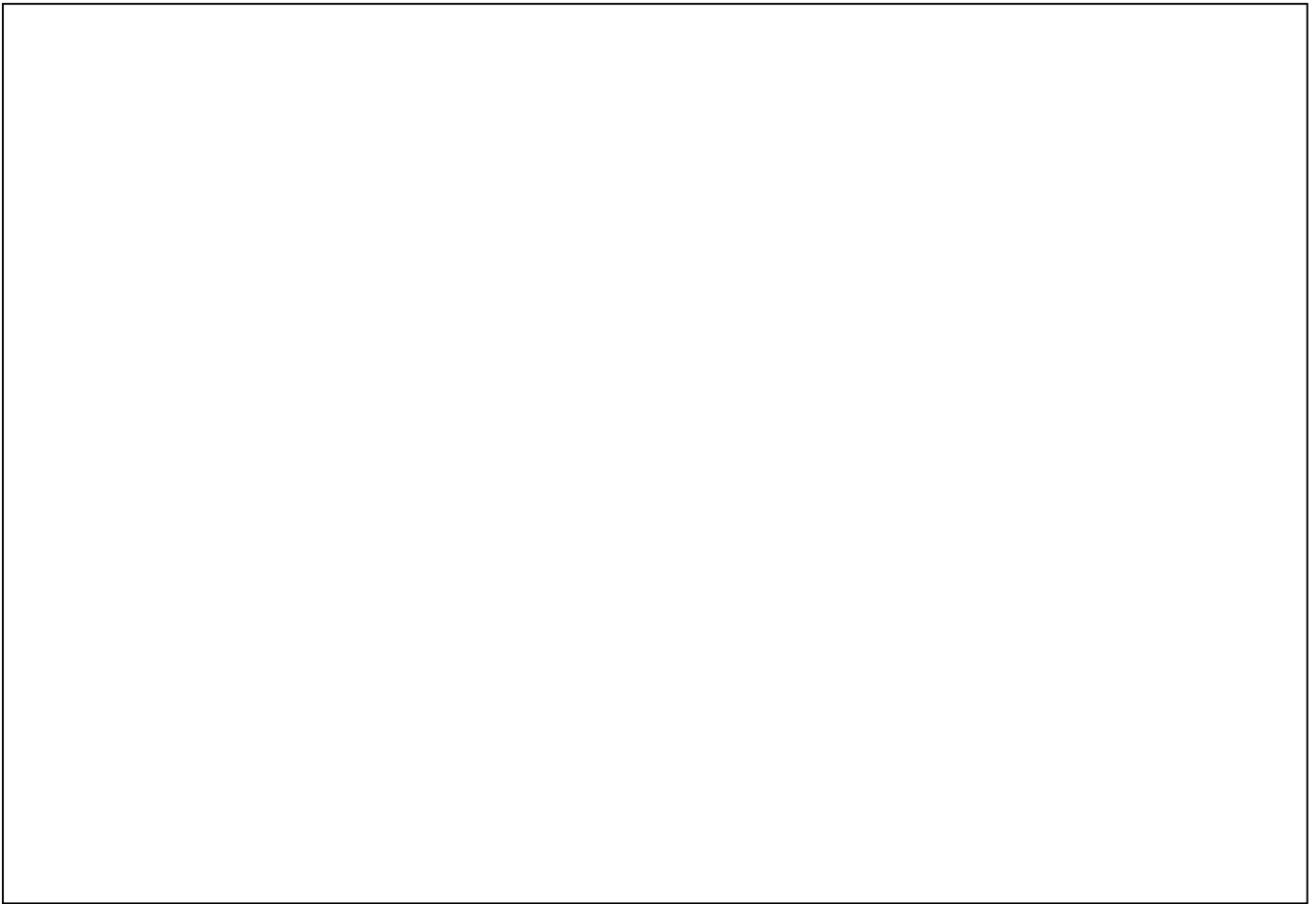
Worksheet 5 - 'Some things to think about'

Worksheet 6 - 'Guess the grid shapes'

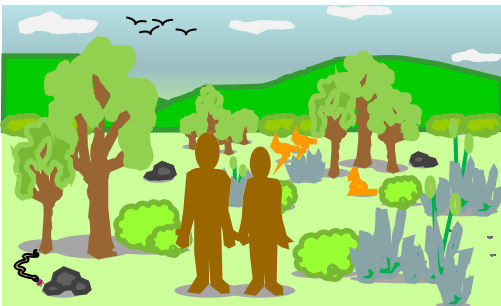
DIFFERENT ENVIRONMENTS

(worksheet 1)

Think of your home or town and draw some things from it that are important in creating it as an environment.



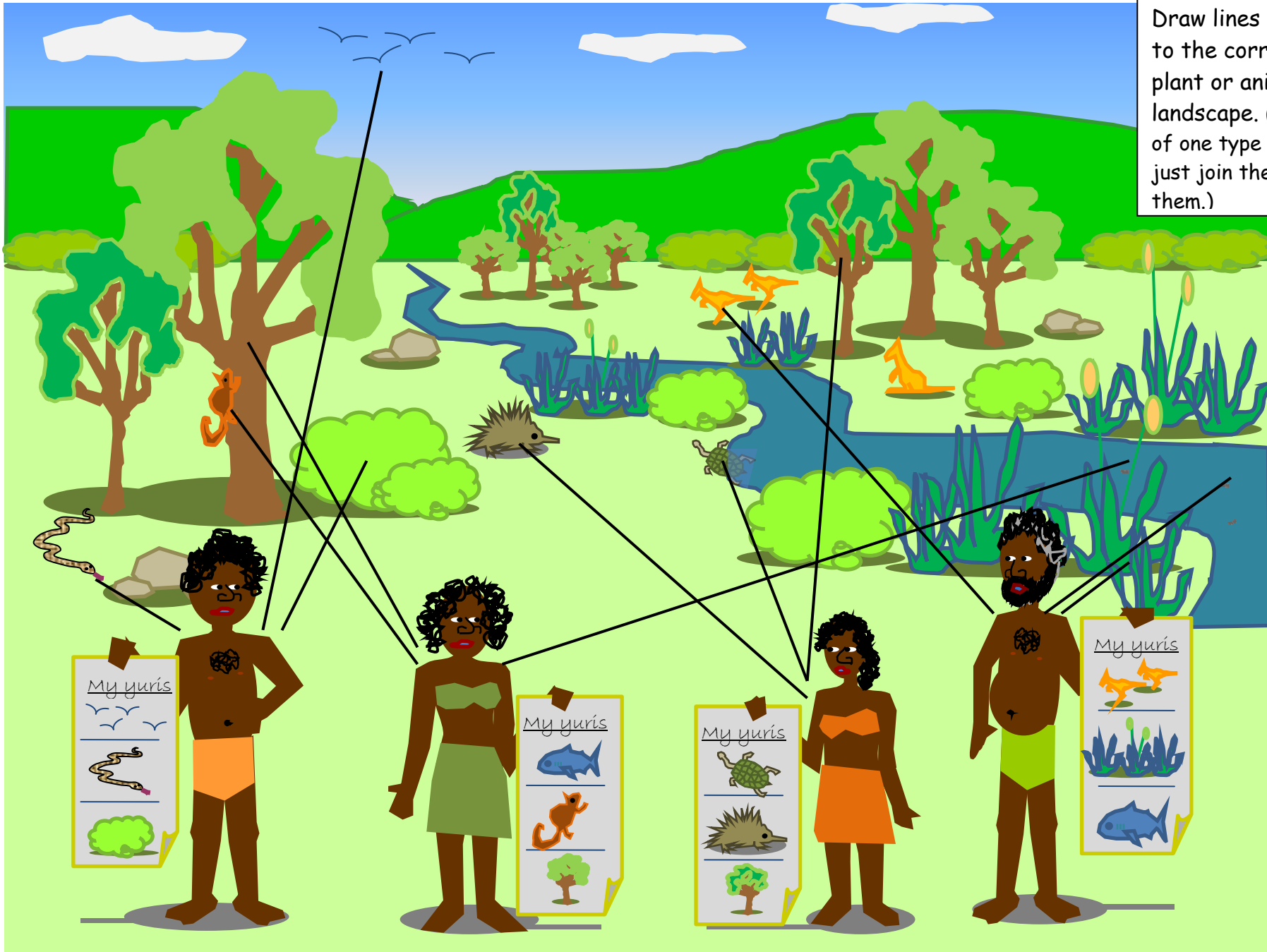
On the PowerPoint you were shown a picture of the Aboriginal peoples' environment.



It is important to realise that Aboriginal people lived in Australia when there was **only nature**; they lived in a world of only; plants, animals, and the landscape, such as mountains, rivers, deserts and seas. There were no such things as cars, buildings, metal, plastic, paper, electricity or water from taps.

Just like the things in our world today create our life-style. The Aboriginal life-style was created by nature. This caused Aborigines to have a **strong connection to nature**.

Yuris (worksheet 2)
Draw lines from each person to the corresponding yuri plant or animal in the landscape. (If there are lots of one type of plant or animal, just join the line to one of them.)



CROSSWORD (worksheet 3)

From the computer presentation you have learnt some things about the ceremonies at Gummingurru and the Bunya Mountains. Answer the Questions in the box about these ceremonies (down) and also the questions about some of the ceremonies which are common in our modern Australian culture (across).

Answer the questions with the words listed, and fill in the cross word.

1. W E D D				2. I N G			1. B					
				N				U				
				2. B	I	R	T	H	D	A	Y	N
					T						A	
					I							
3. G			R	A	D	U	A	T	I	O	N	
					T							
					I		3. Y					
					O		U					
4. F	U	N	E	R	A	L						
E				I								
M												
A												
L												
E												
S												

- WORDS**
- Females
 - Birthday
 - Bunya
 - Yuri
 - Wedding
 - Funeral
 - Initiation
 - Graduation

Across
Ceremonies in our modern Australian culture

1. The ceremony when two people join as husband and wife.
2. The ceremony held when you turn one year old.
3. When you finish going to primary or secondary school you have what type of ceremony?
4. What ceremony is held when someone dies?

Down
Aboriginal Ceremonies at Gummingurru and the Bunya Mountains

1. What type of fruit does the ceremony at the Bunya Mountains celebrate?
2. What is the ceremony when boys are recognised as adults at Gummingurru?
3. At the Gummingurru ceremony what are Aboriginals boys given?
4. Who was not allowed at the Gummingurru initiation ceremony?

WHAT IS EXPECTED OF YOU WHEN YOU GO TO GUMMINGURRU? (worksheet 4)

Circle the correct answer(s)

1- The stones at Gummingurru were positioned by Aboriginal people hundreds of years ago. How should you behave when you visit these stones?

Move the stones

Leave the stones alone

2- At Gummingurru you may see some animals; some of them can be dangerous. How should you behave if you see an animal?

Leave the animals alone

Touch the animals

3- Some of the animals that you may see at Gummingurru are poisonous. Which ones are poisons?

Snakes

Dogs

Kangaroos

Centipedes

Birds

4- It is very important that we concentrate and listen when people are speaking to us. What is the behaviour that is expected of us?

Play and talk to our friends

Listen carefully

5- Brian takes care of Gummingurru, he wants his place to look beautiful for all his visitors. What should you do with your rubbish?

Place in the rubbish bin or take the rubbish home

Drop your rubbish on the ground

6- There is not much shade at Gummingurru, what things are important for you to take with you when you know you will be in the sun a lot?

Water

Scarf

Sunscreen

Bike-helmet

Hat

"SOME THINGS TO THINK ABOUT..."

(worksheet 5)

Fill the gaps in the story with the words in the box below.

important	warming	easier
healthy	nature	hundred
thousands	home	separate

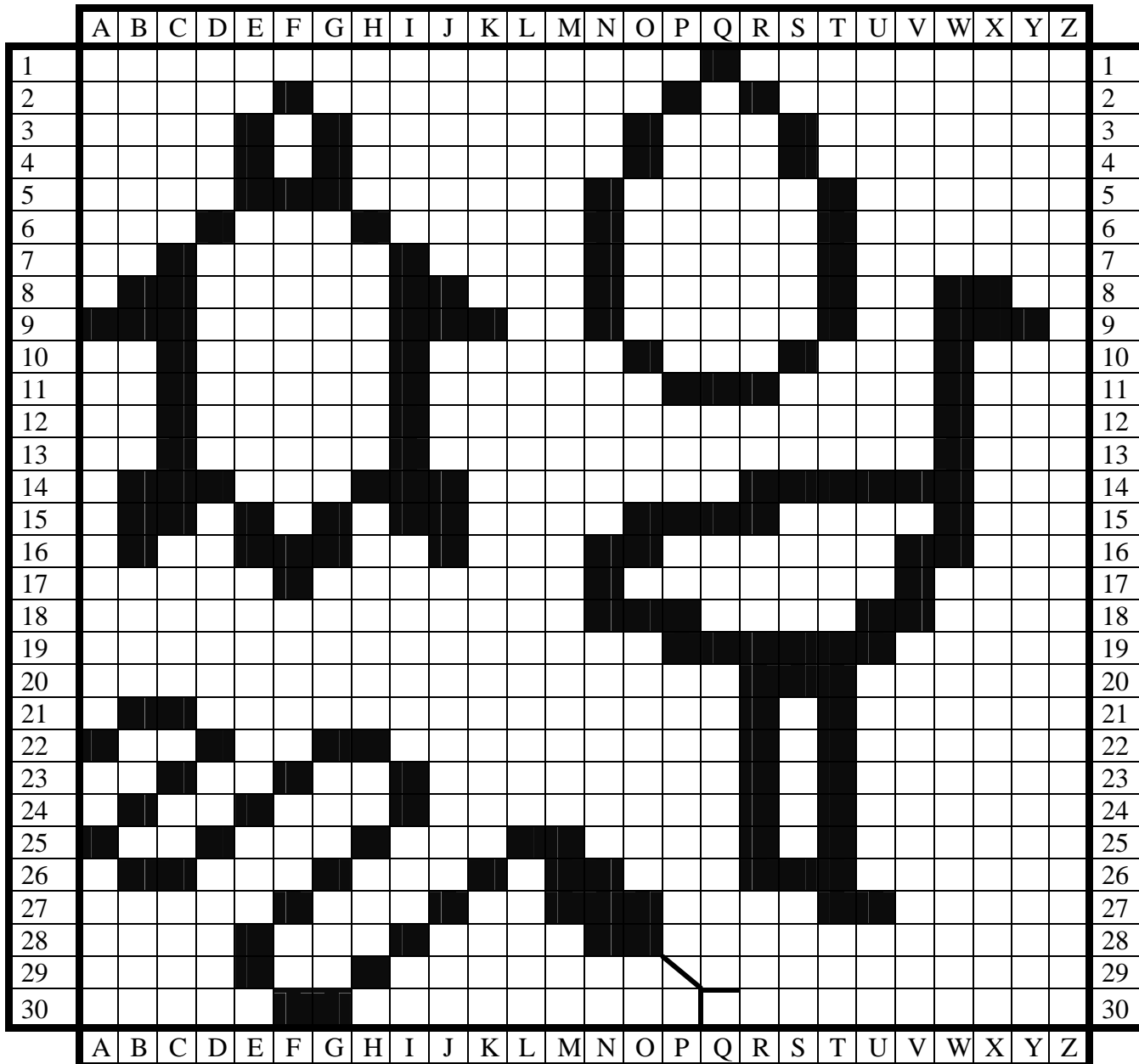
Australian Aboriginal people live with nature and know a lot of things about it. They also know that they are part of nature and it is their home. This way of living has survived for thousands of years, though ice ages, droughts and other difficult times. Compare this with today, where modern humans have only been living the way they've been living for a few hundred years, with a lot of change happening in the last 100 years. This way of living has its good side, such as electricity, computers, supermarkets, cars and enormous buildings - things that make life easier. But we still need nature - every day of our lives we rely on nature being healthy.

Unfortunately, though, our modern way of living has come at a cost. Many modern people who live in towns and cities feel separate from nature, and things such as chopping down forests, pollution and global warming are hurting nature - the very thing we need!

But there is hope! If we all do our bit to look after nature, it will look after us.

So it seems Aboriginal people have always known how much their survival depends on the good health of nature and how important it is for them to look after it. Maybe modern humans need to realise this and reconnect with nature. What do you think?

Guess the Grid Shapes (worksheet 6) - In the grid below, fill in each square (or range of squares) that matches the co-ordinates given for each shape. Once you've finished a set of co-ordinates, the filled-in squares should form a shape that is similar to those at Gummingurru. The first square for Shape 1 has been filled in for you. Have fun!



Shape 1

- A9
- B8, B9, B14 to B16
- C7 to C15
- D6, D14
- E3 to E5, E15, E16
- F2, F5, F16, F17
- G3 to G5, G15, G16
- H6, H14
- I7 to I15
- J8, J9, J14 to J16
- K9

What is it?

Turtle

Shape 2

- 8W, 8X
- 9W to 9Y
- 10W
- 11W
- 12W
- 13W
- 14R to 14W
- 15O to 15R, 15W
- 16N, 16O, 16V, 16W
- 17N, 17V
- 18N to 18P, 18U, 18V
- 19P to 19U
- 20R to 20T
- 21R, 21T
- 22R, 22T
- 23R, 23T
- 24R, 24T
- 25R, 25T
- 26R to 26T
- 27T, 27U

What is it?

Emu

Shape 3

- A22, A25
- C21, C23, C26, E24, E28, E29
- G22, G26, G30
- I23, I24, I28
- K26
- M25 to M27
- O27, O28
- B21, B24, B26
- D22, D25
- F23, F27, F30
- H22, H25, H29
- J27
- L25
- N26 to 28

What is it?

Snake

Shape 4

- Q1
- 3O, 3S
- N5 to N9
- 10O, 10S
- P11
- 2P, 2R
- T5 to T9
- O4
- 11Q
- S4
- R11

What is it?

Bunya Nut

If you can't guess this shape you will know what it is once you have been to Gummingurru.

